



RELEASE: VIDA 2014C
INFORMATION FOR DEALERS

ABOUT THIS DOCUMENT	1
INSTALLATION	2
COMMUNICATION TOOL	4
NEW CAR MODELS & INFORMATION	4
START TAB	5
VEHICLE PROFILE TAB	5
INFORMATION TAB	6
WORK LIST TAB	6
DIAGNOSTICS TAB	6
SOFTWARE TAB	8
SEARCH TAB	8
ADDITIONAL INFORMATION	9

ABOUT THIS DOCUMENT

This document describes new features and information in VIDA. There are some initial notes on installing VIDA and new car models etc. The new information is divided according to the navigation tabs in VIDA. Information that does not fit in any of the above tabs is placed under the heading *ADDITIONAL INFORMATION*.

Please ensure that all VIDA users have access to VIDA Release News.

INSTALLATION

VIDA Monitor

Improvements have been made concerning the startup of VIDA.

- The time allowed for one of the components involved in the startup of VIDA has been extended from 60 seconds to 4 minutes.
- Changes have been made in order to minimize the risk that an error message, saying Port 80 is being used by VIDA, being shown after installation of an eUpdate.

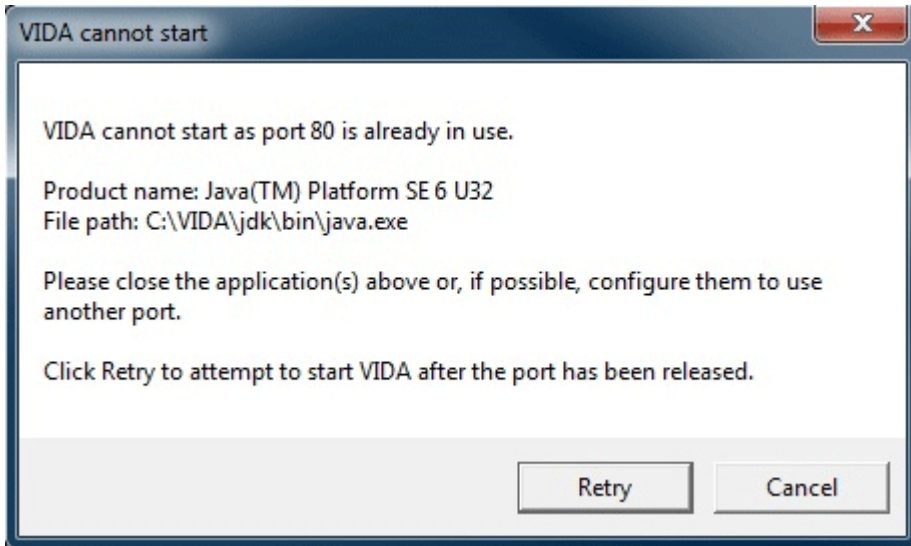


Fig. 1 VIDA cannot start


A question mark  will from VIDA version 2014C be shown if VIDA for some reason does not start as expected.



Fig. 2 Start failed

It will then be possible to perform an attempt to restart VIDA by right clicking the VIDA Monitor icon and select **Restart**.

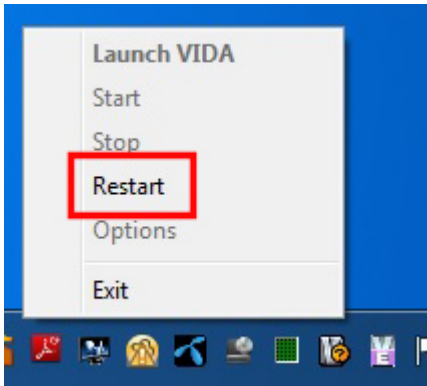


Fig. 3 Restart

eUpdate 2014CU1

eUpdate 2014CU1 is an important part of the VIDA 2014C installation. When VIDA 2014C is installed for the first time, or if the previous installed version is not VIDA 2014B, it can take up to two hours after the registration of VIDA before eUpdate 2014CU1 will be downloaded and installed. To force the installation of eUpdate 2014CU1, ensure that VIDA has been registered and then restart the computer. The eUpdate will then be downloaded and installed immediately.



NOTE

If you want to use more than one VIDA language, make sure you install all languages before restarting the computer. After installing eUpdates it is not possible to add another language unless you reinstall VIDA.

Installing VIDA 2014C over VIDA 2014A or earlier release

If you do not have the previous VIDA release (VIDA 2014B) installed on your PC and you install this new version, VIDA will be installed in full (as if VIDA had not previously been installed at all). In this case you have to click on the [REGISTRATION GUIDE FOR SUBSCRIPTION](#) on VIDA All-in-one 's log in page and register VIDA All-in-one again. Comments in the Parts Catalog and all types of saved lists (e.g. Download history, Latest identified vehicles and Work List information) will **not** remain.

Reinstalling VIDA 2014C

If in the future you have to reinstall VIDA 2014C please note that all eUpdates will also have to be reinstalled.

VIDA Installation time

Various installation tests are performed at Volvo Cars Customer Service and the results are presented in the table below. The installation times refer to the language with the most data, which for the VIDA 2014C release is the Russian language.

VIDA 2014C	VIDA 2014C over VIDA 2014B	VIDA 2014C over VIDA 2014A	EWD ¹
19 min	17 min	22 min	41 min

¹Electronic Wiring Diagram.

The test computer has the following specifications:

Operating System	Processor	Processor speed	RAM
Windows 7 Professional (64 bit) with Service Pack 1	Dual Core	2.7 GHz	4 GB

The computer is equipped with Microsoft Security Essentials. A different anti-virus application may cause longer installation times than those stated above.

COMMUNICATION TOOL

Nothing new to report.

NEW CAR MODELS & INFORMATION

Indirect Tire Pressure Monitoring System (iTPMS)

A new tire pressure monitoring system, Indirect Tire Pressure Monitoring System (iTPMS), goes into default on the European market structure week 201439 on all vehicles except V60 Hybrid and XC90. The new system differs from Tire Pressure Monitoring System (TPMS) thus no pressure sensors are mounted in the wheels. TPMS is still provided as an accessory.

START TAB

Nothing new to report.

VEHICLE PROFILE TAB

CSC

The following CSC have been added to VIDA:

Symptom Type	Function Group (Level 1)	Function Group (Level 2)	Component/ Functionality	Deviation	CSC
Function	8 Body and interior	83 Doors and lids	Power operated tailgate	Is not pulled to full closing position	41
Function	8 Body and interior	83 Doors and lids	Power operated tailgate	Opening with foot movement does not work	42
Function	8 Body and interior	83 Doors and lids	Power operated tailgate	Can not be operated by using button at driver seat position	43
Function	8 Body and interior	87 Climate units	Climate control system	Can not be operated by using Rear Console Switch Module (RCSM)	44
Function	3 Electrical system	36 Other electrical equipment	Outlet 115/230 V	Does not work	45
Function	3 Electrical system	35 Lighting	Exterior light front (excl headlight)	Turn signal located on door mirrors do not work	46
Function	8 Body and interior	83 Doors and lids	Central locking	Glovebox locking/ unlocking does not work	47
Function	6 Suspension and steering	64 Steering	Parking assistance	Parking Assist Pilot (PAP) does not work	48
Function	3 Electrical system	39 Media, communication and navigation	Remote update	Memory full	51
Function	3 Electrical system	39 Media, communication and navigation	Remote update	Does not work	52

INFORMATION TAB

Nothing new to report.

WORK LIST TAB

Nothing new to report.

DIAGNOSTICS TAB

Reset of water pump running time

From structure week 201440 a running time counter for the water pump (parking heater, CPM) is added for S60/S80/V70/XC70/XC60. If the pump is replaced the counter shall be reset via **DIAGNOSTICS → VEHICLE COMMUNICATION → CCM → Advanced**. The reset is performed by the service technician in VIDA as a step in the replacement method.

Adaptation of AW transmission updated

Document for adaption of Transmission Control Module (TCM) has been updated. The updated schedule is the same for all AW transmissions (AW55-50/51SN, AW50/51 AWD, TF-80SC, TF-80SC AWD, TF-80SD, TF-80SD AWD, TG-81SC and TG-81SC AWD).

Affected variants

Models	Model Year
C30	All
S40 (-04)	2001-2004
V40 (-04)	2001-2004
S40 (04-)	All
V40 (13-)	All
V40 Cross Country	All
V50	All
S60	All
S60L	All
V60	All
XC60	All
C70	All
V70	All
XC70	All
S80	All
S80L	All
XC90	All

SOFTWARE TAB

Improved key handling

There is an improved handling of keys in the software download area to make it more robust. This means that if you wish to go offline during the time you perform the software download (if you for example move the vehicle away to clear work space with the computer inside with no access to internet) you now have to check the box in the lower right corner in the software download view.

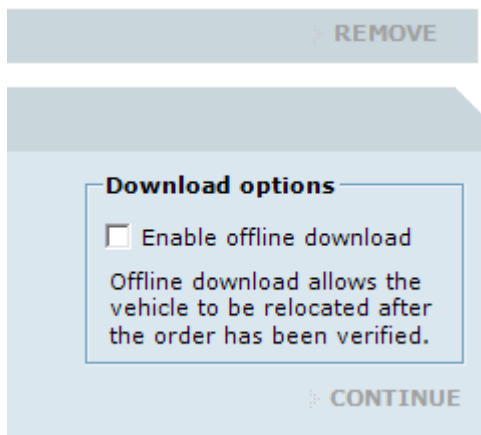


Fig. 4 Transfer Options

Showing software download time for USB

There is a new category of time added in the **Order details** area for downloading software to the vehicle using USB. See example below:

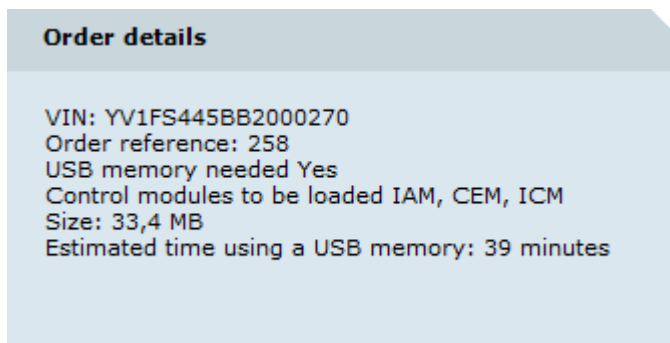


Fig. 5 Order details

SEARCH TAB

Nothing new to report.

ADDITIONAL INFORMATION

Owner's manual for installation in vehicle



NOTE

The DOM DVD is not to be used in the VIDA stations, only in the vehicle's CD/DVD slot.

A digital version of the owner's manual is preloaded into the Infotainment Head Unit (IHU). When replacing the IHU it is important to ensure that the correct version of the manual is installed. The pop-up after IHU software download is a reminder to check the version of the installed manual. A script is telling the technician what version of the manual (DOM DVD) to install. The script is reached via the following instruction in VIDA:

Vida → Information → Repair → Removal, replacement and installation → Electrical system → Media, communication and navigation/equipment for entertainment (radio/TV/VCR) → Infotainment Head Unit (IHU).

Please follow the instruction to ensure that correct version of the Owner's Manual is installed in the vehicle, it is important due to:

- legal requirements
- the vehicle/IHU does not have version handling, the logic is built in VIDA hence, it is possible to install wrong version of the manual.

DOM DVDs should be stored in the workshop for future use. They have 20 years life-cycle.

DOM DVDs can be ordered as per SMB 39-012.

EWD 2014C DVD


In the VIDA 2014C package there is a EWD-DVD included which contains the old and the new EWD application. This EWD 2014C DVD contains wiring diagram information for S40 (05-)/V50 (04-) model year 2004 and all car models for model year 2005-2015.

The EWD only contains the wiring diagrams in one language, the one your VIDA is subscribed for.

The EWD 2014C DVD can be run from the DVD directly or installed together with VIDA. The computer needs to have Windows 7 and at least Internet Explorer 9 installed. More information about the use of the EWD application is included on the disc.

The EWD application can be opened and run directly from the disc or installed on the computer. To get the best performance the recommendation is to install the EWD application on the computer.

Changes in this EWD version concerning model year 2015:

- Following issues that were present in EWD 2014B have been solved.
 - Not possible to open wiring diagrams for Model Year 2015.
 - Some Electronic Wiring Diagrams applicable for Model Years earlier than 2015 did not load.
 - Printed wiring diagrams for Model Year 2015 did not include translations.
- It is now possible to print wiring diagrams for users running Internet Explorer 10.
- Frequently Asked Questions has been added under the Information page.
- Power feed wires will now be displayed in red in all wiring diagrams.
- The number of component location views have increased and quality has been improved.
- Harness images have been added. Work is ongoing to include all images for all harnesses. More harnesses will be added in future releases with the goal to provide complete and accurate information for all harnesses.
- Wiring harness label location has been added to wiring harness images. Look for the bar code symbol, , in the image to find the location of the harness label.
- Translation errors have been corrected.

